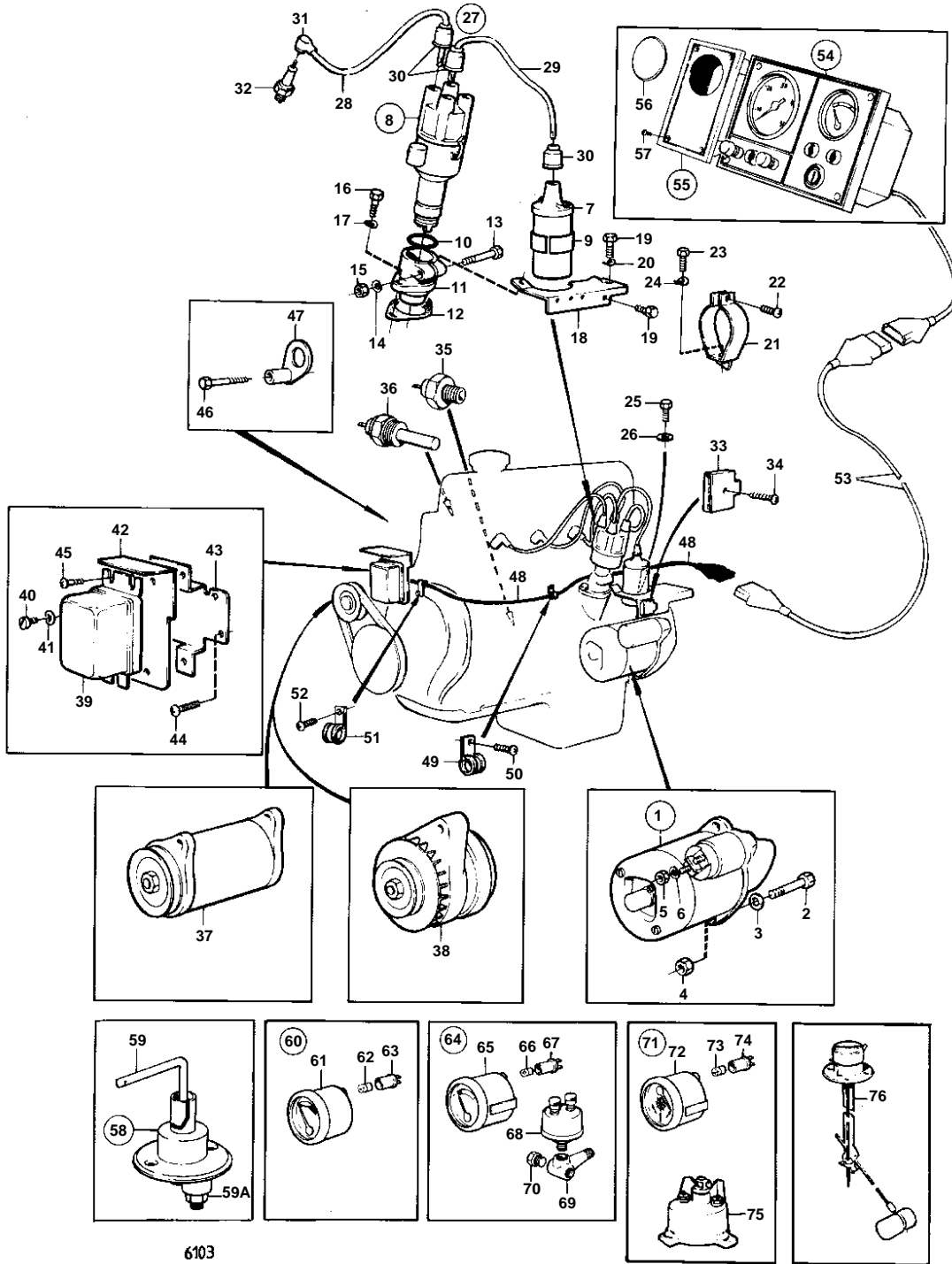


AQ115A, AQ115B



AQ115A, AQ115B

REF	PART NO.	QTY	DESCRIPTION	SEE SEC.	NOTES
1		1			POUR SECTION CABLE 0,5-1,5 MILLIM% E2TRE-CARR% E1
				12843	
	834339	1	Starter motor		MOXXXX/114815-
	3803074	1	Starter motor, exch, exch		MOXXXX/114815-
				12844	
2		2	Hexagon screw		
3	955896	2	Washer		
4	940157	2	Hexagon nut		
5	955782	1	Hexagon nut		
6	941907	1	Spring washer		
7		1	IGNITION COIL		FOR CABLE AREA 0,75-2,0 SQMM., MO-XXXX/120676
	834462	1	Ignition coil		MOXXXX/120677-
8	241531	1	Distributor		FOR CABLE AREA 1,5-2,5 SQMM., ALT
				12864	
	834465	1	Distributor		FOR CABLE AREA 10,5-16,0 SQMM., ALT
				12864	
9		1	Intermediate ring		MO-XXXX/120676
10	925060	1	O-ring		
11		1	Flange		
12	418265	1	Gasket		
13	955515	1	Hexagon screw		
14	941906	1	Spring washer		
15	955825	1	Hexagon nut		
16	955524	2	Hexagon screw		
17	941907	2	Spring washer		
18		1	BRACKET		FOR CABLE AREA 3,0-6,0 SQMM.
		1	Bracket		MO-XXXX/103956
		1	Bracket		MOXXXX/103957-
19	955524	2	Hexagon screw		MO-XXXX/103956
20	941907	1	Spring washer		MO-XXXX/103956
21		1	Clamp, CLAMP		MOXXXX/103957-
					MO-XXXX/120676
		1	Clamp		MOXXXX/120677-
22		1	Screw		MOXXXX/103957-
23	955524	1	Hexagon screw		MOXXXX/103957-
24	955894	1	Washer		MOXXXX/103957-
25	940113	1	Hexagon screw		MOXXXX/103957-
26	941907	1	Spring washer		MOXXXX/103957-
27	875363	1	Cable kit		
28		4	· IGNITION CABLE		
29		1	· IGNITION CABLE		
30	241608	6	· Protective sleeve		
31	956913	4	· Cable terminal		
32	875803	1	Spark plug kit		(241627)
33		1	FUSE BOX		FOR CABLE AREA 16 SQ MM., EARLY TYPE
	824823	1	Fuse box		LATE TYPE
34		2	Screw		EARLY TYPE
		1	Screw		LATE TYPE
35	1266085	1	Pressure switch		(672910)
36	824552	1	Temperature sensor		
37		1	GENERATOR AND INSTALLATION COMPONENTS	12839	
					MO-XXXX/103956
38			ALTERNATOR AND INSTALLATION COMPONENTS	12866	
				12867	
					MOXXXX/103957-
39		1	Governor		MO-XXXX/103956
40	956074	1	· Cross recessed screw		B+
	956095	2	· Cross recessed screw		D+, D-
41	941906	3	· Spring washer		

AQ115A, AQ115B

REF	PART NO.	QTY	DESCRIPTION	SEE SEC.	NOTES
42		1	Splash plate		MO-XXXX/103956
43		1	Bracket		MO-XXXX/103956
44		4	Cross recessed screw		MO-XXXX/103956
45	950046	3	Cross recessed screw		MO-XXXX/103956
46	940115	1	Hexagon screw		MO-XXXX/75892
47		1	Lifting eye		MO-XXXX/75892
		1	LIFT EYE		MOXXXX/75893-
					SEE GROUP 2A
48		1	Cable trunk		MO-XXXX/103956
		1	Cable trunk		MOXXXX/103957-
49	952627	1	Clamp		MO-XXXX/103956
50	950046	1	Cross recessed screw		MO-XXXX/103956
51	952624	2	Clamp		MO-XXXX/103956
	946834	1	Clamp		MOXXXX/103957-
52		2	Cross recessed screw		MO-XXXX/103956
		1	Cross recessed screw		MOXXXX/103957-
53	825738	X	Cable trunk		L = 2500 MM
	820419	X	Cable		L = 7000 MM
		X	LIFT DEVICE		SEE GROUP 4A, 9
54		1	Instrument panel, INSTRUMENT PANEL SINGLE INSTALLATION		EARLY TYPE
				12851	
		1	Instrument panel, INSTRUMENT PANEL TWIN INSTALLATION		EARLY TYPE
			• COMPONENTS		SEE GROUP 9
		1			REPLACED BY 1EA 846622 FLOW SWITCH AND 1EA 846632 NIPPLE., ACC. TO CLASSIFICATION., MO-XXXX/114814
				12852	
		1	Instrument panel		ACC. TO CLASSIFICATION., MOXXXX/114815-
				12852	
55		1	Instrument panel		
56	839128	1	• Plastic plug		
57	944540	4	• Screw		
58	870980	1	Main switch		
59	243700	1	• Handle		
59A	955783	2	• Hexagon nut		
60		1	Voltmeter		12V
61		1	• Voltmeter		
62	19923	1	• Bulb		
63	808175	1	• Lamp socket		
64		1	Instrument		
65		1	• Instrument		
66	19923	1	• Bulb		
67	808175	1	• Lamp socket		
68	881432	1	• Sensor		
69	834391	1	• T-nipple		
70	191026	1	• Plug		
71		1	Rudder indicator		
72		1	• Rudder indicator		
73	19923	1	• Bulb		
74	808175	1	• Lamp socket		
75	837772	1	• Position sensor		
76		1	Tank gauge, TANK GAUGE DRINKING WATER		SEE GROUP 9
		1	Tank gauge, TANK GAUGE FUEL		SEE GROUP 9